

**SPECIALIST CONTRACTOR FOR
INDUSTRIAL FLOOR COATINGS**

No. 42, Jalan Bagan Nira 26/8,
Kawasan Hicom Seksyen 26,
40400 Shah Alam, Selangor Darul Ehsan.
Tel: 03-5192 9172, 5192 9173 Fax: 03- 5192 9175
E-mail: txtco@streamyx.com.my

**BC-CRETE HD****PRODUCT DATE SHEET****A SLIP RESISTANCE, HEAVY DUTY POLYURETHANE MORTAR (6mm-12mm)****Description :**

BC-Crete HD is a 4-components thermal shock polyurethane mortar screed applied in thickness from 6-12mm floor coating. Seamless, high mechanical properties, high chemicals, anti-slip, heat and cool resistance with texture matt finish.

Use :

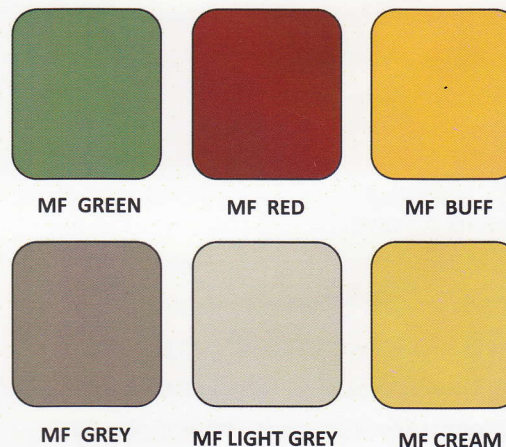
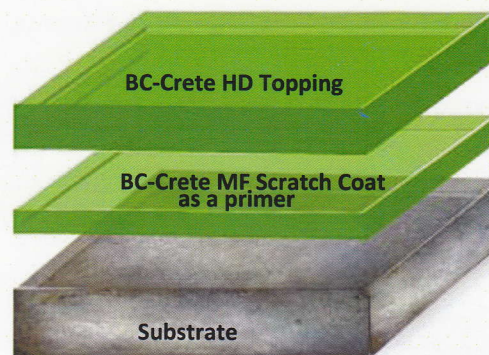
Area use for **GMP, HYGIENIC, HACCP** industrial floors, for wet food processing, beverage, seafood, meat, kitchen, cold storage, freezer(cool room), palm oil processing and wet packaging plants.

Benefits :

- >Hygienic hot water steaming clean.
- >Hard wearing; good abrasion resistance.
- >High chemical resistance against alkalis, acids and organic solvents.
- >High mechanicals and impact resistance.
- >Temperature service with wide range between -40°C to 150°C
- >Resist fungi, mildew and bacteria growth.
- >Solvent free, odorless
- >After cured, non-cytotoxic response
- >Anti-slip for safety; oily floor.

Colours: Standard

MF Green, MF Red, MF Grey,
MF Cream, MF Buff, MF Light Grey.
(Exposed to UV may occur colour change)

**TECHNICAL DATA**

1.	Density (28C) g/cm ³	2.2	10.	Mixing ratio by weight A : B : C : D	3 : 3 : 2 : 24
2.	Tensile strength	25 MPa	11.	Pot life (working time)	15°C 30min
3.	Compressive strength (28 days)	50N/mm ²			25°C 25min
4.	Adhesive strength	>1.5MPa			30°C 22min
		(concrete failure)	12.	Packing Size(4 components)	32kg
5.	Flexural strength	15MPa		A: 3kg / B: 3kg / C: 2kg / D: 24kg	
6.	Taber abrasion resistance	weight loss 5mg	13.	Shelf life & storage	12months
	1000(cycles)			(unopened and in good conditions temperature 10°C to 30°C)	
7.	Service temperature:		14.	Material consumption:	2.2kg/m ² @1mm
	at 6mm to 9mm :	-15°C ~ 130°C(max)	15.	Recoating time(28°C)	within 14 to 18 hours
	at 3mm to 12mm :	-40°C ~ 150°C(max)	16.	Curing time:	
8.	Shore D hardness	80 ~ 85			
9.	Cytotoxicity (2.4 or less)	below < 0.5			

	15°C	25°C	32°C
Human traffic	24hrs	18hrs	16hrs
Light traffic	36hrs	30hrs	24hrs
Fully chemicals cure	7days	6days	5days

SUBSTRATE REQUIREMENT &

PREPARATION :

Substrate concrete or screed should be a minimum of compressive strength 25N/mm^2 and adhesive pull-off strength of minimum 1.5N/mm^2 . The substrate should be clean and free from laitance, oil, dust, loose constituents, paint residues, chemicals, algae and other contamination should be removed. The substrate should be dry and free from ground water pressure. If substrate moisture exceeded 8%, apply BC-Crete HD with minimum thickness 8mm and above. The substrate must be prepared by vacuum shot blasting, rough contaminations to remove by grinding. Cracks and hollows should be properly remedied. Prepare grooves 5mm wide x 5mm deep at all edges, bay joints columns, doorways and drains for anchoring purpose.

MIXING :

Shake Part A Polyol before pour into the barrel, add Part B and Part A into the clean mixing barrel and mix for 5 second by using a suitable electrical stirrer (with 750RPM High Power Mixer), then only add in the pigment powder Part C to mix for 5 seconds. After that add in Part D Filler to mix at-least one minute and twenty seconds until it fully achieved a homogeneous consistent.

APPLICATION :

>Apply BC-Crete MF to do scratch coat (+/- 1mm thick) use as a primer for sealing well the substrate porosity.

>Usually within 14~24 hours; scratch coat cured. Then only allow to do layering BC-Crete HD Topping onto the scratch coat.

>Must apply BC-Crete HD within the pot life (working time) , spread the composite matrix with notched squeegee box as per requirement thickness, immediately use a short nap roller dipped in toluene and roll evenly on the surface to get the surface texture finishing evenness.

TEMPERATURE :

BC-Crete HD should not apply temperatures below 5°C and temperatures above 35°C .

Maintenance and care after cure :

We recommend basic cleaning and maintenance will prolong the life of polyurethane floors, clean regularly using a single or double headed rotary scrubber drier in conjunction with alkaline detergent.

Further Information :

Warning and precautions information relating to the safe handling of this product should be found in Material Safety Data Sheet. To be advise to put on suitable clothing and eye-ware for protection purpose. The application area/site must be in good ventilation otherwise advisable to use a portable exhaust fan.

Important Note :

Best Crete product are warranty against defective materials. Due to different substrate and working conditions, no guarantee of an application result or any liability claims. The users are required to have a test ahead based on their intended use.



BC-CRETE MF

PRODUCT DATA SHEET

A SELF-SMOOTHING POLYURETHANE SCREED (3 – 6 mm)

Description :

BC-Crete MF is a self-smoothing 3 component thermal shock polyurethane floor coating. Seam less, high chemical, high mechanical properties, heat and slip resistance with matt finish.

Use :

Area use for **GMP, HYGIENIC, HACCP** industrial floors in the food industry, beverage, seafood, meat, bakeries processing, cold storage, kitchen, pharmaceutical industrial, warehouses, logistics areas, palm oil processing and packaging plants.

Benefits :

- >Hygienic hot water steaming clean.
- >Hard wearing, good abrasion resistance.
- >High chemical resistance against alkalis, acids and organic solvent
- >High mechanicals and impact resistance.
- >Temperature service with wide range between -5°C to 100°C
- >Resist fungi, mildew and bacteria growth.
- >Solvent free, odorless
- >After cured, non-cytotoxic response.

Colours: Standard

MF Green, MF Red, MF Grey,
MF Cream, MF Buff, MF Light Grey.
(Exposed to UV may occur colour change)



TECHNICAL DATA

1.	Density (28C) g/cm ³	1.9	10.	Mixing ratio by weight A : B : C	3 : 3 : 14
2.	Tensile strength	25 MPa	11.	Pot life (working time) 15°C	30min
3.	Compressive strength (28 days)	50N/mm ²		25°C	25min
4.	Adhesive strength	>1.5MPa		30°C	22min
		(concrete failure)	12.	Packing Size(3 components)	20kg
5.	Flexural strength	21MPa		A: 3kg / B: 3kg / C: 14kg	
6.	Taber abrasion resistance	weight loss 5mg	13.	Shelf life & storage	12months
	1000(cycles)			(unopened and in good conditions temperature 10°C to 30°C)	
7.	Service temperature:		14.	Material consumption:	1.9kg/m ² @1mm
	at 3mm :	5°C ~ 80°C(max)	15.	Recoating time(28°C)	within 14 to 18 hours
	at 6mm :	-5°C ~ 100°C(max)	16.	Curing time:	
8.	Shore D hardness	79 ~ 84			
9.	Cytotoxicity (2.4 or less)	below < 0.5			

	15°C	25°C	32°C
Human traffic	24hrs	18hrs	16hrs
Light traffic	36hrs	30hrs	24hrs
Fully chemicals cure	7days	6days	5days

TEXTRACO (MALAYSIA) SDN. BHD.

(Co. Reg. No: 122000-D)

No. 42, Jalan Bagan Nira 26/8,

Kawasan Hicom Seksyen 26,

40400 Shah Alam,

Selangor Darul Ehsan.

Tel: 03-51929172, 51929173 Fax: 03-51929175

SUBSTRATE REQUIREMENT &

PREPARATION :

Substrate concrete or screed should be a minimum of compressive strength 25N/mm² and adhesive pull-off strength of minimum 1.5N/mm². The substrate should be clean and free from laitance, oil, dust, loose constituents, paint residues, chemicals, algae and other contamination should be removed. The substrate should be dry and free from ground water pressure. If substrate moisture exceeded 7%, apply Epoxy mortar (compressive strength 60N/mm²) 4-5mm thick as a moisture barrier. The substrate must be prepared by vacuum shot blasting, rough contaminations to remove by grinding. Cracks and hollows should be properly remedied. Prepare grooves 3mm wide x 3mm deep at all edges, bay joints columns, doorways and drains for anchoring purpose.

MIXING :

Shake Part A Polyol before pour into the barrel, add Part B and Part A into the clean mixing barrel and mix for 5 second by using a suitable electrical stirrer (with 750RPM High Power Mixer), then only add in the pigmented Part C powder to mix at-least one minute and ten seconds until it fully achieved a homogeneous consistent.

APPLICATION :

>Apply BC-Crete MF to do scratch coat (+/- 1mm thick) as a primer for sealing well the substrate porosity.

>Usually within 14~24 hours; scratch coat cured. Then only allow to do layering BC-Crete MF Topping onto the scratch coat.

>Must apply BC-Crete MF within the pot life (working time), spread the composite matrix

with notched squeegee or pin rake and set it to the correct depth or requirement thickness. Immediately release the air/bubble by using spike roller.

TEMPERATURE :

BC-Crete MF should not apply temperatures below 5°C and temperatures above 35°C.

Maintenance and care after cure :

We recommend basic cleaning and maintenance will prolong the life of polyurethane floors, clean regularly using a single or double headed rotary scrubber drier in conjunction with alkaline detergent.

Further Information :

Warning and precautions information relating to the safe handling of this product should be found in Material Safety Data Sheet. To be advise to put on suitable clothing and eye-ware for protection purpose. The application area/site must be in good ventilation otherwise advisable to use a portable exhaust fan.

Important Note :

Best Crete product are warranty against defective materials. Due to different substrate and working conditions, no guarantee of an application result or any liability claims. The users are required to have a test ahead based on their intended use.

TEXTRACO (MALAYSIA) SDN. BHD.

(Co. Reg. No: 122000-D)

No. 42, Jalan Bagan Nira 26/8,

Kawasan Hicom Seksyen 26,

40400 Shah Alam,

Selangor Darul Ehsan.

Tel: 03-51929172, 51929173 Fax: 03-51929175